

For further information on what's happening in school please go to our website www.sandylands.lancs.sch.uk



01524 410286



head@sandylands.lancs.sch.uk

Newsletter



Wk. beg 25.12.23

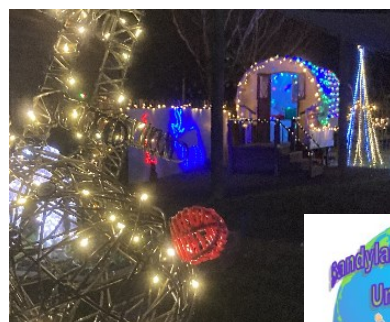
Next holiday— After school Friday 22nd Dec 2pm



Sparklefest

A big thank you to everyone who came to our Sparklefest Event.

We had an amazing time!



Sandylands Choir



The choir have been amazing singing in our community this week. We are very proud of their performances at the Arndale shopping Centre, the Midland and Hillcroft nursing home.

Merry Christmas & Happy New Year from all of the staff at Sandylands



The raffle has been drawn and prizes will be distributed to the lucky winners.

A big thank you to Mike at PDP, Teamtheme, LTA, Inclusions Solutions, NS Optimum, BSS, Jump Rush, Country Style Meats, Morecambe Football Club & Acorn Psychology who generously donated to our raffle

Sustainable Uniform Shop

Our Sandylands' Sustainable Uniform Shop was very popular! We are requesting for any pre-loved uniform in good condition to be donated to help re-stock our supplies. We are especially short of boys uniform age 5-9. We'd be very grateful if you could bring your donations into school. Thank you.



Dates for the Diary

Break up 2pm
Friday 22nd Dec

Return 8th Jan



Lancaster &
Morecambe
College

**Would you like
information on supporting
pupils in a classroom?**

**Interested to know your
employment and training options?**

Join us for our

Become a Teaching Assistant Information Event

Friday 8 December, drop in between 9.30am until 11.30am

Employer Hub, Lancaster and Morecambe College

Whether you want to become a teaching assistant, work in a nursery as an Early Years Educator, or assist pupils with Educational needs, we can help you achieve the regulated qualifications you need. This event acts as a first step for those who want to work in a support role but don't know where to start.

Contact **01524 521260**

Email **ukspf@lmc.ac.uk**



Funded by
UK Government

SPONSORED BY
**LEVELLING
UP**

What's On?

November - December 2023

Lune Park

Ryelands Park, Owen Road,
Lancaster, LA1 2LN

Monday:

Baby & You
(0-pre walkers)
10am - 11am

Tuesday:

Infant Massage (B)
10am - 11am 11am - 12pm

Chat, Play & Read
(0 - Preschool)
1pm - 2.30pm

Wednesday:

Development Matters
(0 - Preschool)
9.30am - 10.30am

Chill & Chat
10.30am - 11.30am

Colourful Footsteps
(0 - 8 years)
1pm - 2.30pm

Thursday:

Teen Triple P Group
9.30am - 11.30am

Parents to Be
5.30pm - 7.30pm

Friday:

Mini Move & Groove
(0 - Preschool)
9.30am - 11am

Poulton Sensory Room

Poulton Sensory Room
is available to use
free of charge
at
Poulton Neighbourhood
Centre.

Use of the Sensory
Room is subjected
to availability.



Do you want to
know more information
about the sessions,
or have a
general query about
what else we offer?

Give us a call on
01524 581280

The following sessions you
need to book on to attend;

Infant Massage
Triple P Courses
Parents to Be Courses

Call 01524 581280 to book.



Carnforth

Kellett Road, Carnforth, LA5 9LS

Monday:

Development Matters
(0 - Preschool)
1pm - 2.30pm

Inside Out
(8 - 11 years)

3.30pm - 4.45pm



Monday:

Special Guardianship
Stay & Play Group
(Please note that this is only
available for families with
a SGO in place.)
9.30am - 11am

Tuesday:

Infant Massage
10am - 11am

Wednesday:

Parents to Be (B)
5.30pm - 7.30pm

Westgate

Langridge Way, Westgate,
Morecambe, LA4 4XF

Thursday:

Chat, Play & Read
(0 - Preschool)
9.30am - 11am

Special Guardianship Support Group
(Please note that this is only available
for families with a SGO in place.)
3.30pm - 4.30pm

Friday:

Development Matters
(0 - Preschool)
9.30am - 11am

Poulton

Clark Street, Morecambe,
LA4 5HR

Monday:

Development Matters
(0 - Preschool)
9.30am - 11am

Infant Massage
1pm - 2pm

Wednesday:

Baby & You
(0 - Pre walkers)
9.30am - 10.30am

Thursday:

Group Triple P (B)
9.30am - 11.30am

Friday:

FAB
(Breastfeeding Support Group)
10.30am - 12.30pm



Morecambe Library

Central Drive, Morecambe, LA4 6DL

Monday:

Move & Groove (8 - 11 years)
3.30pm - 4.45pm

Tuesday:

Young Parents to Be
1pm - 3pm

Inside Out (8 - 11 years)
3.30pm - 4.45pm



Lancaster and Morecambe Family Hub

For more information contact us on 01524 581280



INSIDE OUT

Children and Family
Wellbeing
Service

Come and make friends and have fun!

This group helps to support children who may be struggling to express and manage their emotions or are presenting with anxious behaviours and low self-confidence.
(8-11 years - Key Stage 2)

In the sessions children will be able to:

- Explore wishes and feelings and understand worries.
- Look at ways to help manage strong emotions.
- Take part in creative and physical activities to encourage positive interaction with their peers.
- Build confidence and social skills.
- Meet new people and make new friends.
- Play games.

Most of all come along and have fun!!

**Every Thursday from 11th January 2024 at
Lune Park Hub, Ryelands Park, Owen Road,
Lancaster, LA1 2LN from 3.30pm to 4.30pm**

FREE to attend.
Just turn up or ring
01524 581280
for more information.



Lancashire
County
Council



FREE

Big Cook, Little Cook

**For 5-8 years
old and their
grown up**



Starting Tuesday 9th January 2024

3.15pm to 4.30pm

at

Westgate Neighbourhood Centre

Langridge Way, Westgate, Morecambe, LA4 4XF

**Enjoy time together with your child, and involve them in
the process of making their own food.**

**Learn how to prepare healthy family meals
on a budget that you can recreate at home.**

Free ingredients included.

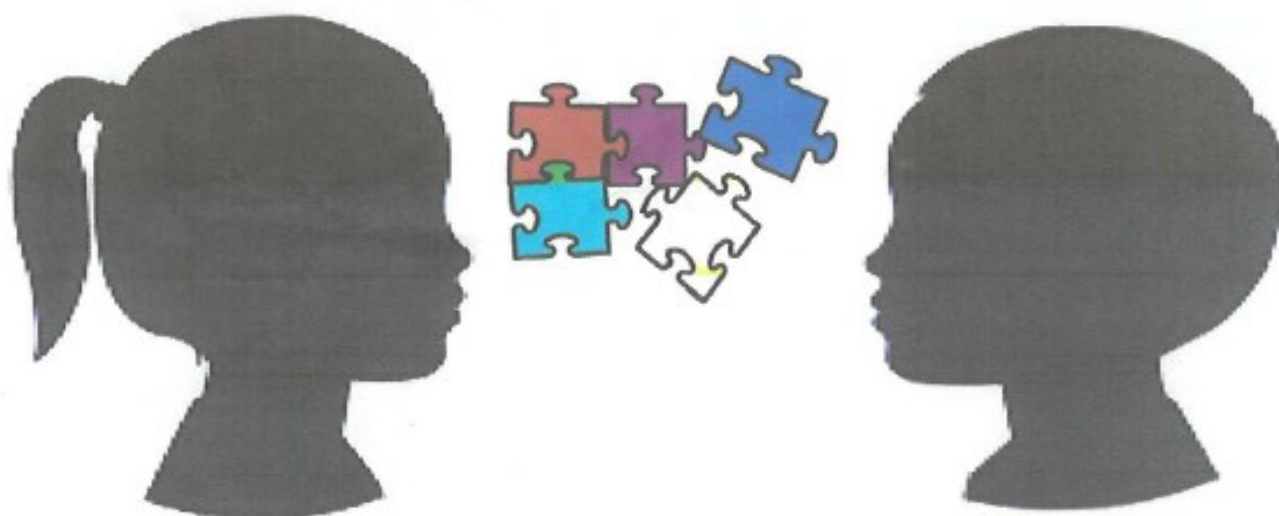
LANCASHIRE
**FAMILY
HUBS**
NETWORK
LANCASTER

**This course runs for 6 weeks.
To book on call 01524 581280.**

Lancashire
County Council



Autistic spectrum disorder



WANT HELP AND INFORMATION?

FEEL THAT NO ONE IS LISTENING?

NEED SOMEONE TO TALK TO?

***THEN COME ALONG TO OUR PEER SUPPORT DROP IN
FOR PARENTS/CARERS OF***

0 - 11 YEAR OLD CHILDREN WITH AUTISM

ON WEDNESDAYS 9.30 TO 11.30

Salvation Army

132, Balmoral Road Morecambe LA3 1HJ

Please ring 01524 415718 for more information

