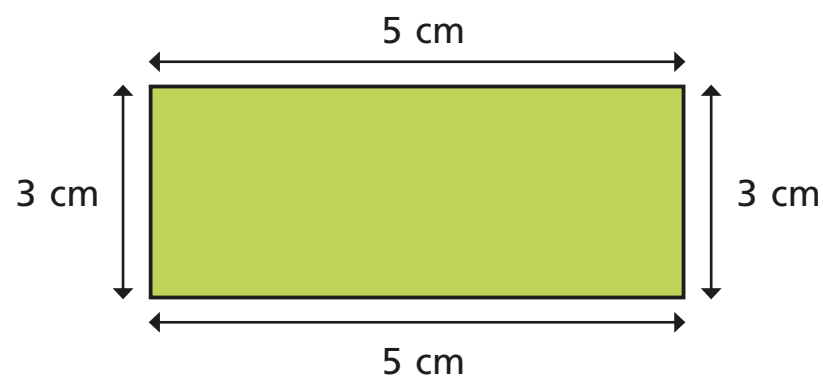


Calculate perimeter

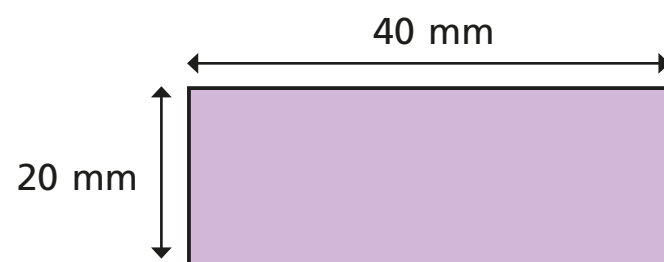
1 Work out the perimeter of each shape.

a)



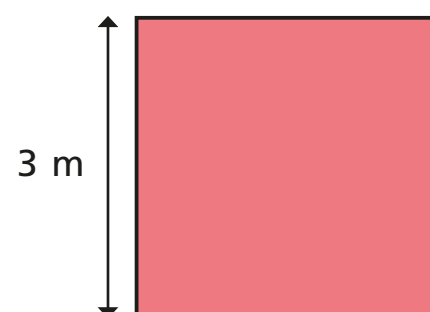
perimeter = 16 cm

b)



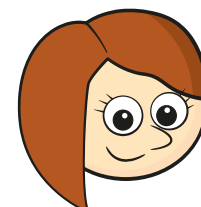
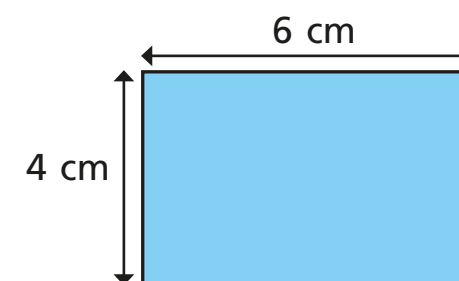
perimeter = 120 mm

c)



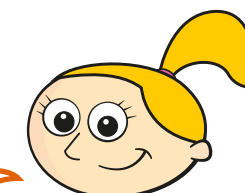
perimeter = 12 m

2 Rosie and Eva work out the perimeter of the shape below.



Rosie

$6 + 4 = 10$,
so the perimeter is
10 cm.



Eva

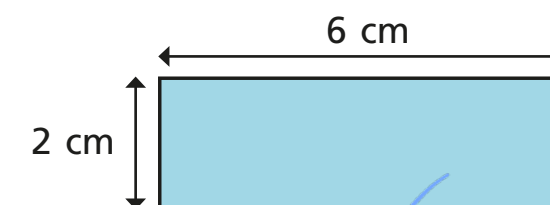
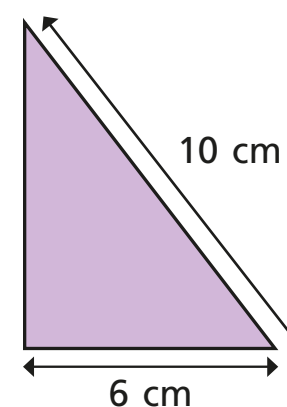
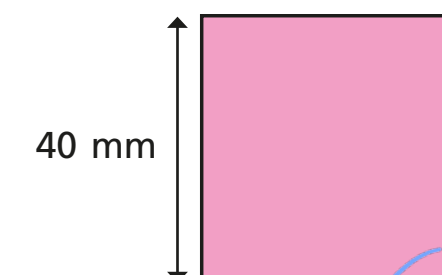
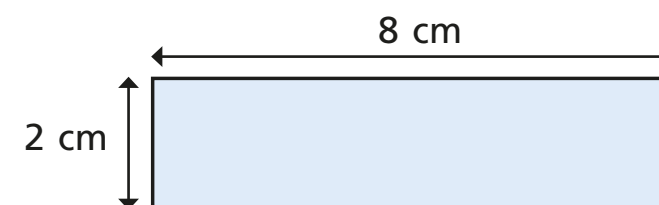
The perimeter is
20 cm.

Who is correct? Eva

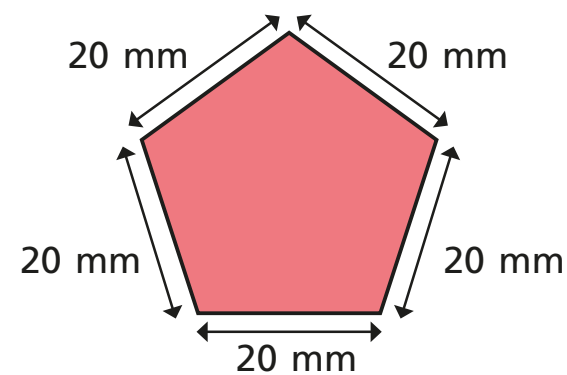
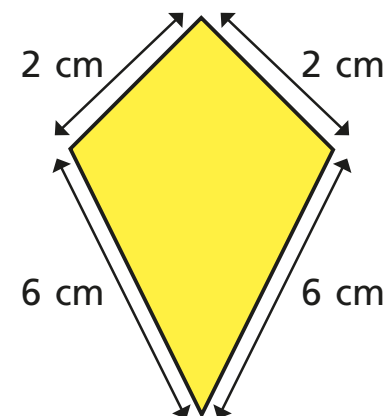
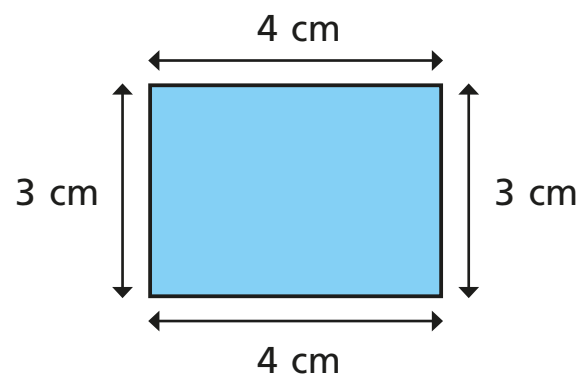
How do you know?

Rosie hasn't included the other two
sides.

3 Tick the shapes with a perimeter of 16 cm.

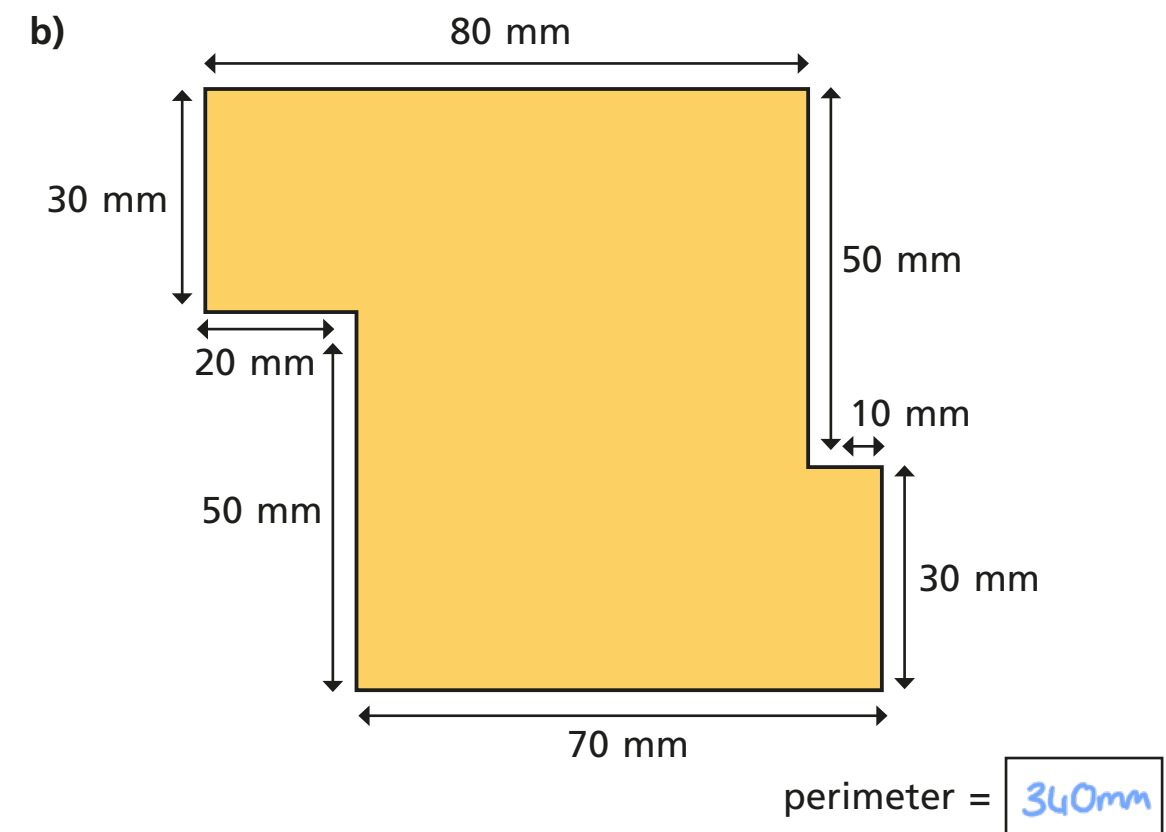
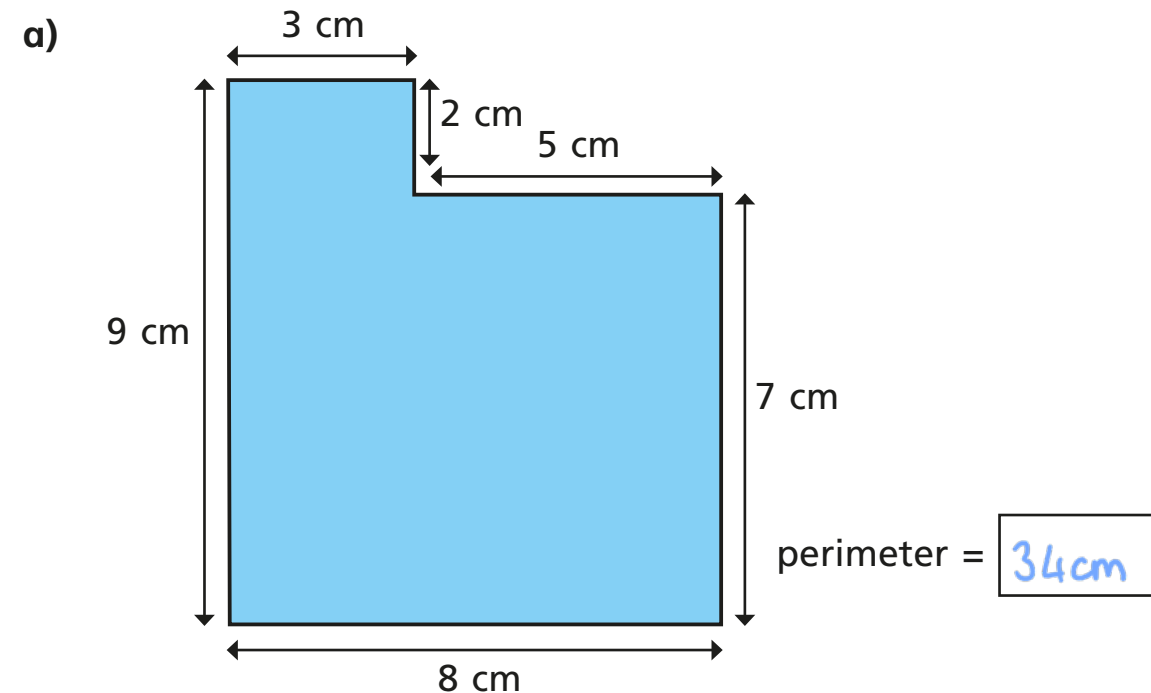


- 4 Which shape has the longest perimeter? Tick your answer.



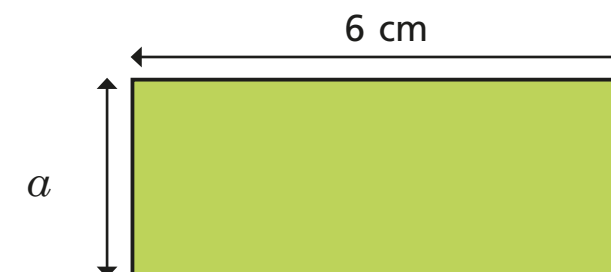
Show all your workings.

- 5 Work out the perimeter of these shapes.



What do you notice?

- 6 This rectangle has a perimeter of 18 cm.
Work out the length of side a .



perimeter = 18 cm

side a = 3 cm