

 SIMON JAMES



Dear Greenpeace

There's a whale in Emily's pond

Dear Greenpeace,

I love whales very much and I think I saw one in my pond today. Please send me some information on whales, as I think he might be hurt.

Love
Emily



Dear Emily,

Here are some details about whales. I don't think you'll find it was a whale you saw, because whales don't live in ponds, but in salt water.

Yours sincerely,

Greenpeace



Dear Greenpeace,

I am now putting salt into the pond every day before school and last night I saw my whale smile. I think he is feeling better. Do you think he might be lost?

Love
Emily



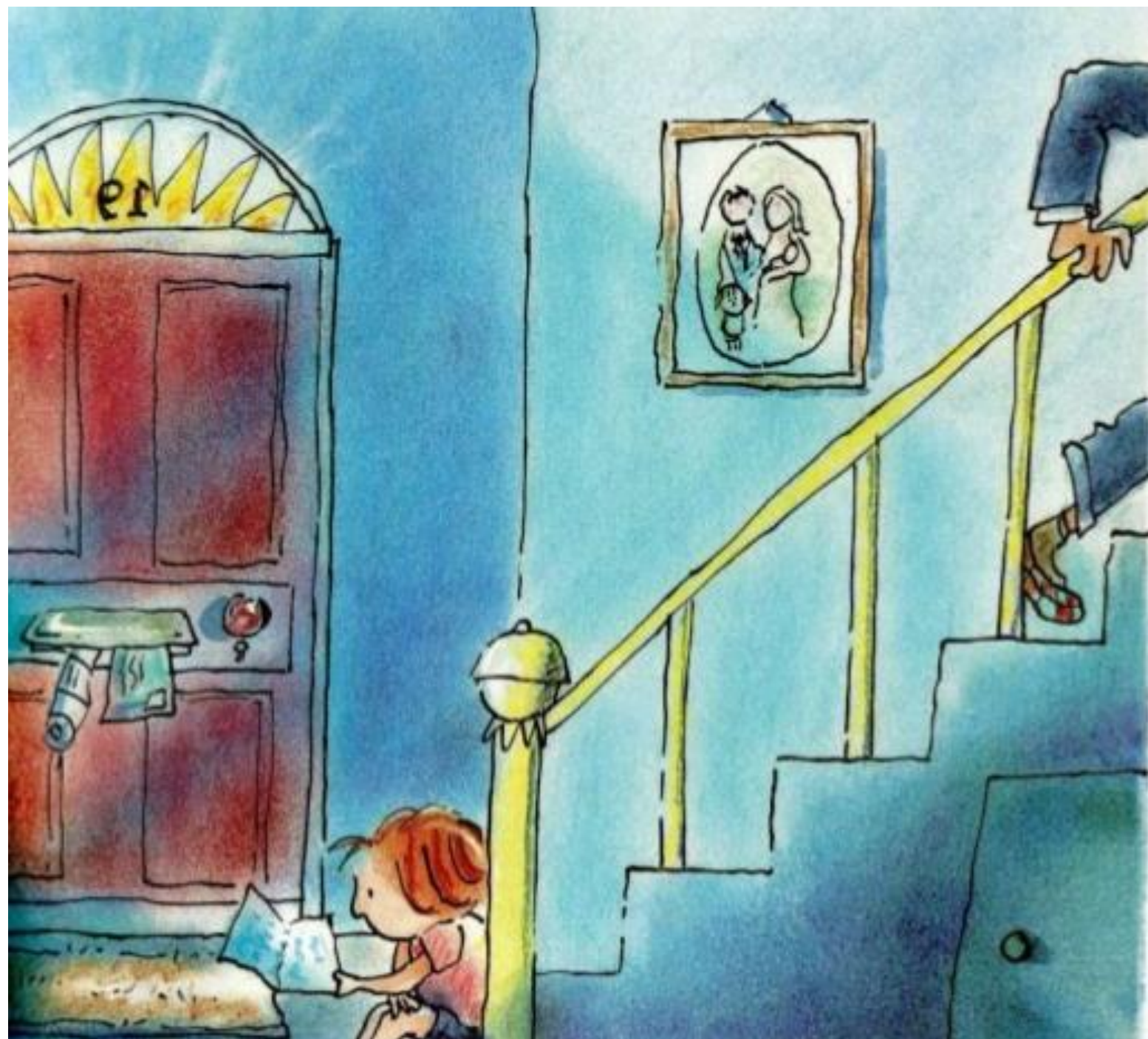
Dear Emily,

*Please don't put any more salt
in the pond, I'm sure your parents
won't be pleased.*

*I'm afraid there can't be a whale
in your pond, because whales don't
get lost, they always know where
they are in the oceans.*

Yours sincerely,

Greenpeace



Dear Greenpeace,

Tonight I am very happy because I saw my whale jump up and spurt lots of water. He looked blue.

Does this mean he might be a blue whale?

Love

Emily

P.S. What can I feed him with?

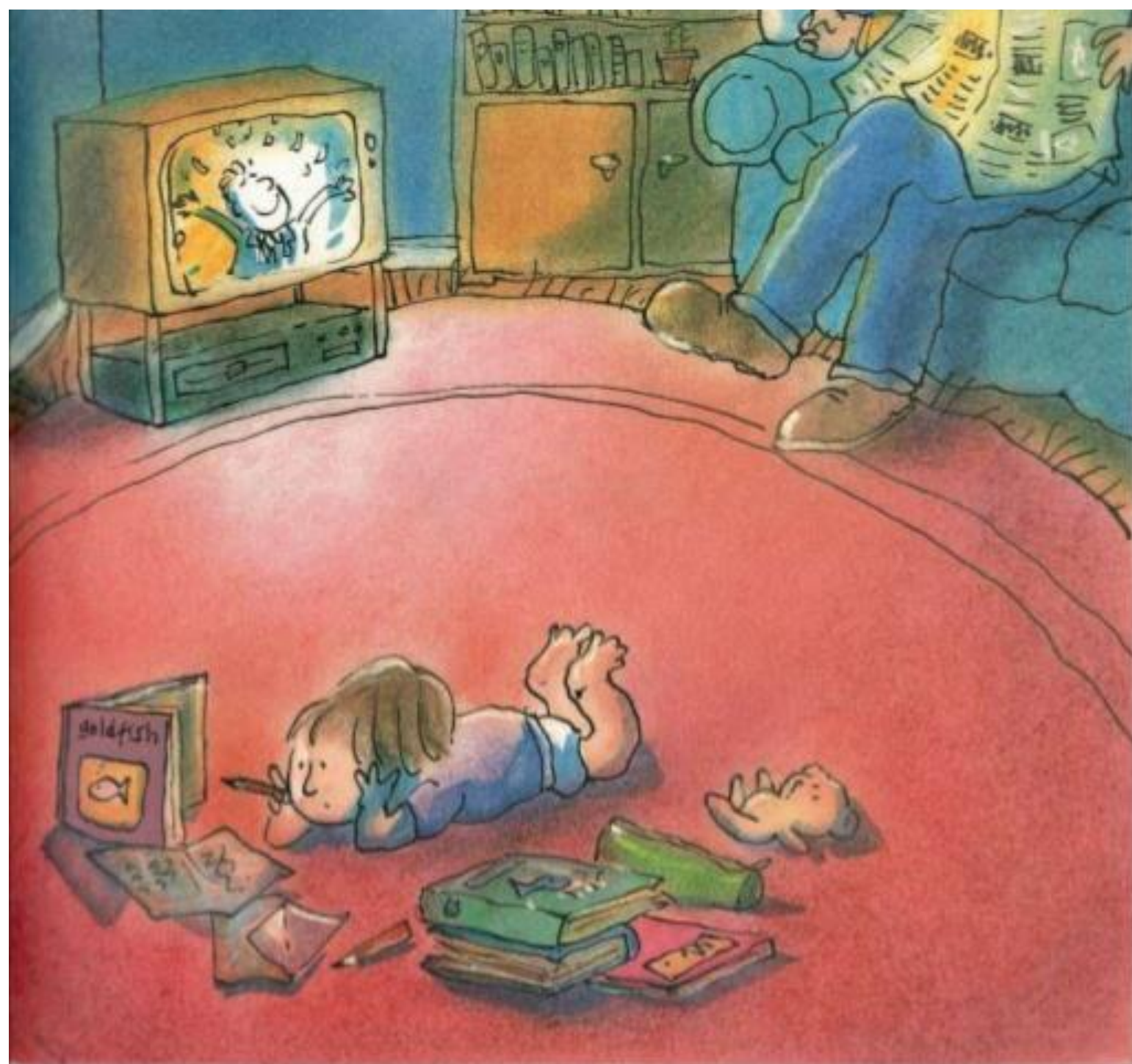


Dear Emily,

Blue whales are blue and they eat tiny shrimp-like creatures that live in the sea. However I must tell you that a blue whale is much too big to live in your pond.

*Yours sincerely,
Greenpeace*

P.S. Perhaps it is a blue goldfish?



Dear Greenpeace,

Last night I read your letter to my whale. Afterwards he let me stroke his head. It was very exciting.

I secretly took him some crunched-up cornflakes and bread-crumbs. This morning I looked in the pond and they were all gone!

I think I shall call him Arthur, what do you think?

Love
Emily



Dear Emily,

I must point out to you quite forcefully now that in no way could a whale live in your pond. You may not know that whales are migratory, which means they travel great distances each day.

I am sorry to disappoint you.

Yours sincerely,

Greenpeace



Dear Greenpeace,

Tonight I'm a little sad. Arthur has gone. I think your letter made sense to him and he has decided to be migratory again.

Love
Emily



Dear Emily,

Please don't be too sad, it really was impossible for a whale to live in your pond. Perhaps when you are older you would like to sail the oceans studying and protecting whales with us.

*Yours sincerely,
Greenpeace*

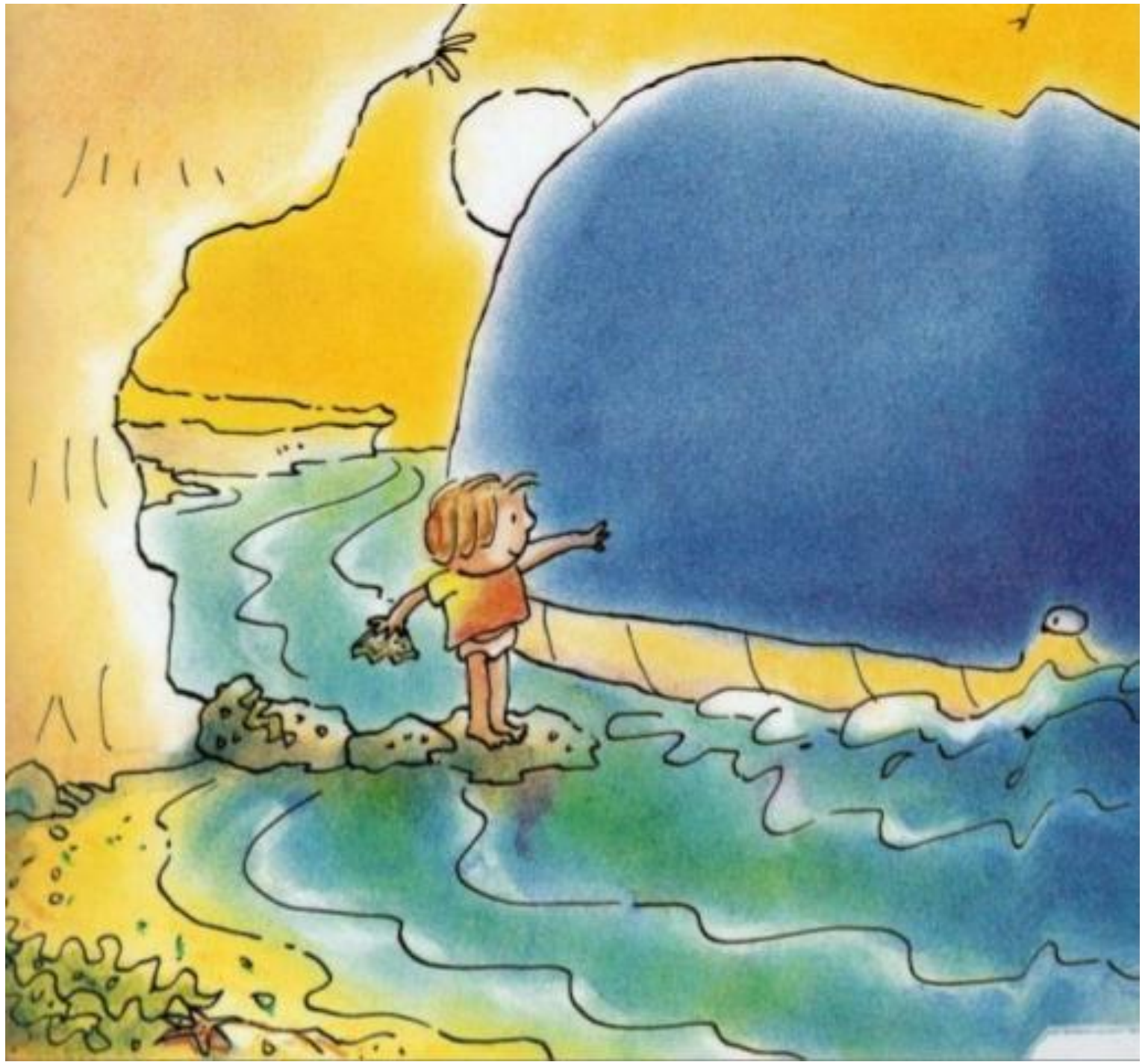


Dear Greenpeace,

It's been the happiest day!

I went to the seaside and you'll never guess, but I saw Arthur! I called to him and he smiled. I knew it was Arthur because he let me stroke his head.

I gave him some of my sandwich...



and then we said goodbye.

I shouted that I loved him very
much and, I hope you don't mind,
I said you loved him too.

Love
Emily (and Arthur)

